



LTD Wee Rad - Base

The LTD Wee Rad – Base model is designed for lifestyle and rural properties delivering a peak heat output of 15kW to warm your home. The generous door glass provides the perfect flame view to enjoy on those cold winter nights. The unique firebox design offers longer burn times ensuring winter warmth, cooking and water heating are all dominant features of this model. Either a 3 or 4kW wetback can be fitted to assist with your water heating requirements.

Model	LTD rural (2 hectares+ land size)
Peak output	15kW
Heating area	150m ² / 3 bedroom home
Finish	Metallic black paint
Wetback	Optional 3kW or 4kW wetback
SKU	200-0765



ECO FLUE

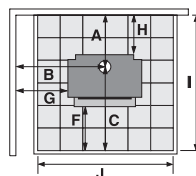
Maximise the performance and efficiency of your wood fire

SPECIFICATIONS

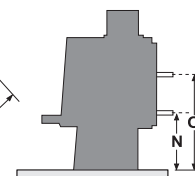
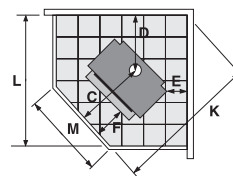
Minimum installation clearances with a Pioneer double flue shield fitted (mm):

A	B	C	D	E	F	G	H	I	J	K	L	M	N	O
251	658	580	486	180	232	350	100	831	825	1270	1048	425	300	490
							Width	Depth	Height					
Dimensions (mm)							615	501	691					

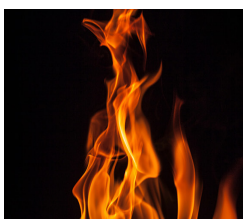
WALL CLEARANCES



CORNER CLEARANCES



Specifications were correct at the time of printing but may alter and those detailed should be used only as a guide. If in doubt, please consult your local Metro Fires agency or visit metrofires.co.nz.



METROFIRES.CO.NZ

metrofires