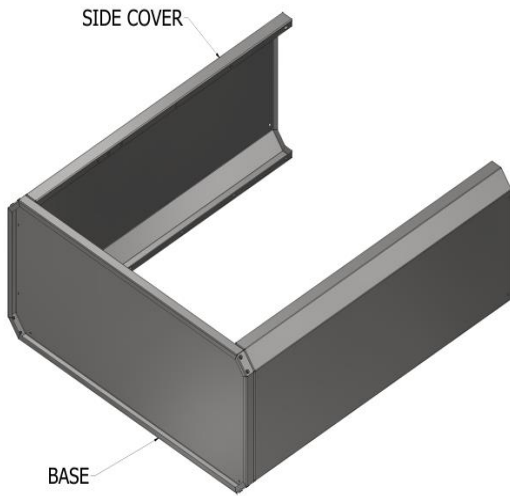




ASSEMBLY GUIDE
CABINET FOR THE JETMASTER
UNIVERSAL 850 L FIREPLACE



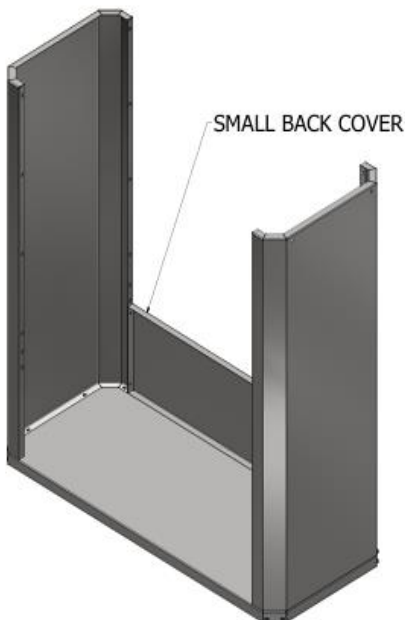
STEP 1: Attach the Side Panels to the Base Plate



- Each of the two side panels has four holes at the bottom end, to allow for attachment to the base plate.
- Using eight M6 x16 stainless-steel hexagonal bolts and nuts, secure the side panels to the base plate.
- At this stage, do not tighten, but hand-fasten the nuts only.
- To prevent scratching of the cabinet panels, use some of the packing material to create a soft ground cover to work on.
- Place the base plate into a vertical position to connect the side panels. This will allow easy access to fit the bolts and nuts.

Tools required: 2 x 10mm Spanners / Socket Wrench

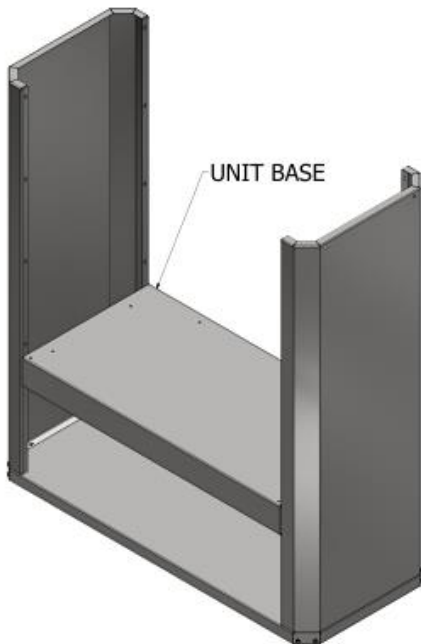
STEP 2: Attach Lower Back Cover Panel



- Place the so far assembled cabinet panels in an upright position.
- Attach the lower rear cover panel using four M6 x16 stainless-steel hexagonal bolts and nuts.
- The two upright side panels have two holes each, low down on one side, corresponding with the holes on the lower rear cover panel, thus indicating the back of the cabinet.
- At this stage do not tighten, but hand-fasten the nuts only.

Tools required: 2 x 10mm Spanners / Socket Wrench

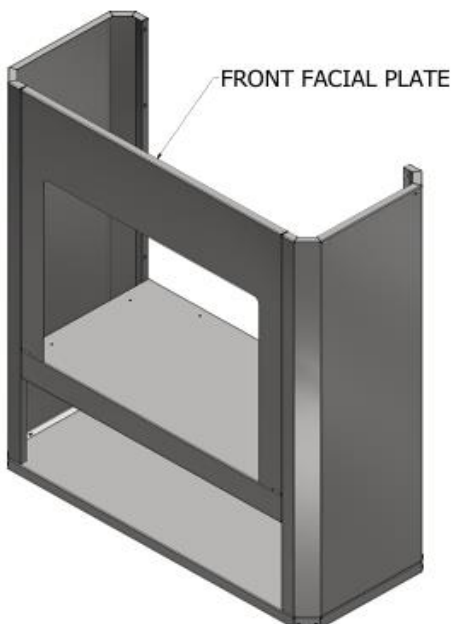
STEP 3: Install the Bridging Shelf



- For easy access, place the cabinet on its back, i.e., in a horizontal position
- Carefully insert the shelf panel, fixing it in place using eight M6 x 16 stainless-steel hexagonal bolts and nuts.
- Each of the two upright side panels has two holes on each side, corresponding with the holes on the shelf panel.
- At this stage do not tighten, but hand -fasten the nuts only.

Tools required: 2 x 10mm Spanners / Socket Wrench

STEP 4: Install the Facia Panel



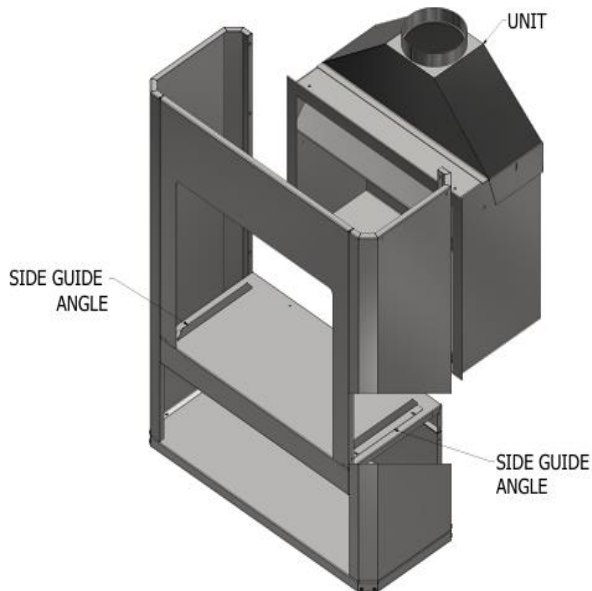
- The front fascia panel is fixed in place by attaching its base to the bridging shelf with M6 x16 bolts, one on each side.
- Working from the top down, insert bolts into the two uppermost holes, on the left- and right-hand side of the fascia panel, only.
- Do not place bolts into the two remaining holes on each side, as these will be used at a later stage to mount the vertical positioning brackets.
- Six M6 x 16 hexagonal bolts and nuts will be required for this step.

Please Note:

- **At this point in the assembly process, securely tighten all bolts and nuts.**

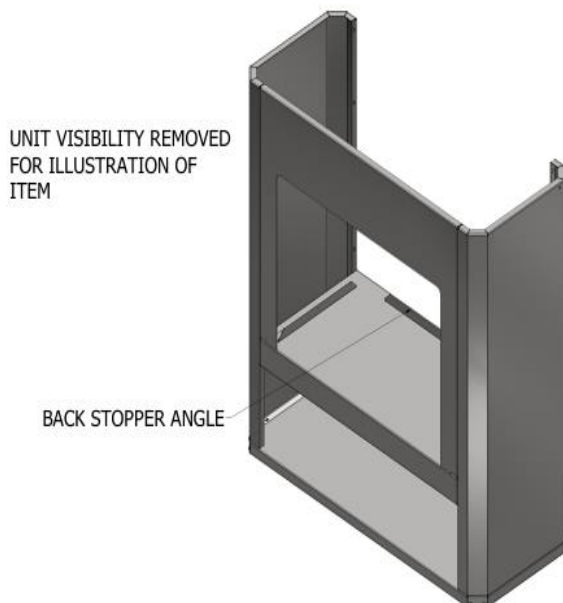
Tools required: 2 x 10mm Spanners / Socket Wrench

STEP 5: Insert the Universal 850 L Fireplace



- The cabinet assembly is now at a stage where the Universal firebox can be inserted, from the rear.
- Due to the substantial combined weight of cabinet and fireplace, the installation of the firebox should ideally take place near the final location of the cabinet.
- Prior to inserting the firebox, place the two side locator brackets, each in its most outward position, with the bolts in place, but not tightened.
- Before the firebox is inserted, the smoke gather should be securely bolted in place.
- Inserting the firebox, due to its weight, will require adequate manpower.
- Once the firebox is centered relative to the fascia opening, fasten the two base locator brackets securely in place to prevent any sideways shifting of the firebox.

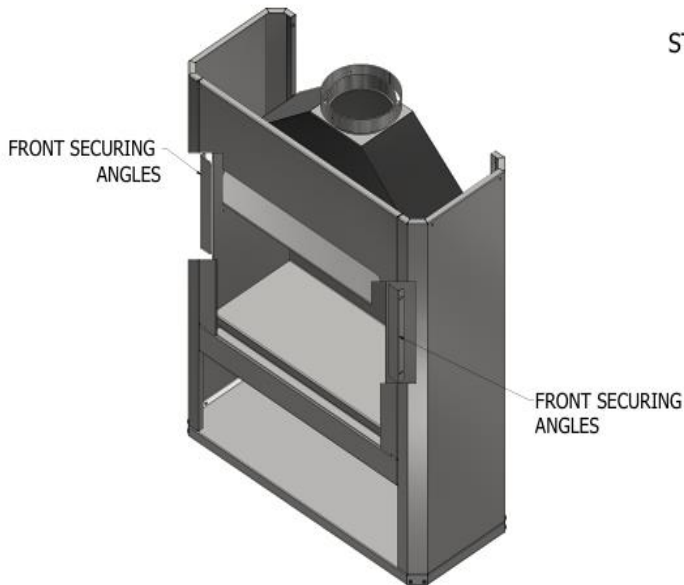
STEP 6: Install the Rear Locator Bracket



- With the firebox installed and prevented from moving sideways by the left-and right-hand side locator brackets, the next step involves the placement of the rear locator bracket.
- Preventing any backwards movement of the firebox, the bracket is bolted in its place using two M6 x 16 hexagonal bolts and nuts.
- Pushing the bracket tight against the rear firebox panel, fasten the bracket securely.

Tools required: 2 x 10mm Spanners / Socket Wrench

STEP 7: Install the Vertical Locator Brackets

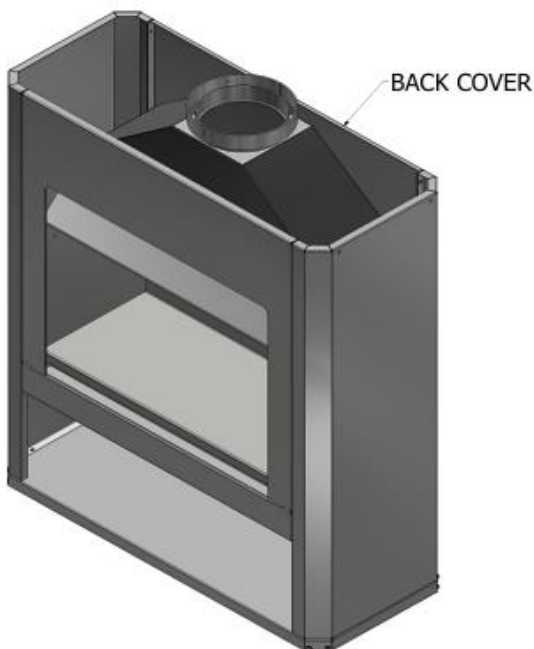


S1

- Install the two vertical locator brackets, one on the left, the other on the right-hand side.
- Each bracket must be pushed as tight as possible against the rear, vertical part of the fireplace's fascia surround, before it is securely tightened in place.
- The brackets are mounted in place, using the four holes, two on the left and two on the right, left without bolts, described in Step 4.
- Four M6 x 16 hexagonal bolts and nuts are required for this step.

Tools required: 2 x 10mm Spanners / Socket Wrench

STEP 8: Installation of the Back Panel and Firebox Insulation



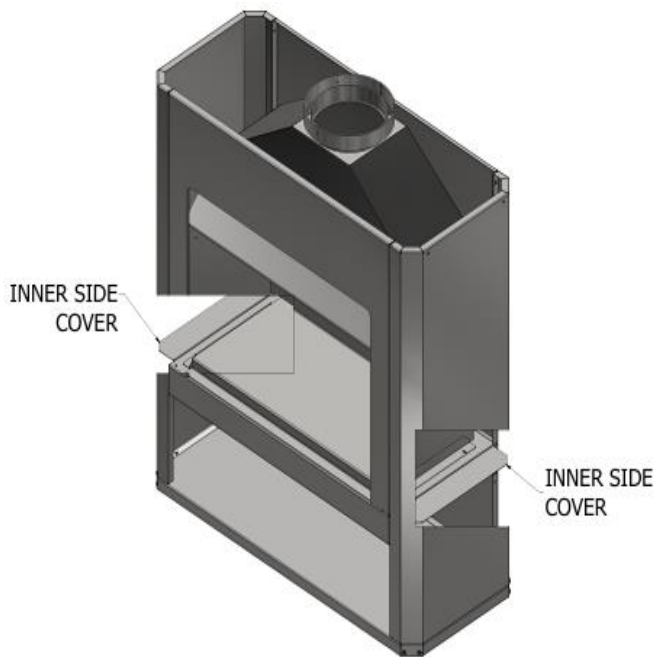
- The upper, rear cover panel can now be placed in position and attached using eight M6 x 16 hexagonal bolts, four on each side.
- The two lowest of the bolts on each side are difficult to access, reaching from the top down. These two bolts should thus be inserted whilst the panel is tilted slightly backwards to allow access to each, before the panel is located flush with the two side panels. To tightening the two low down nuts, access can be gained through the openings on each side of the log box.

Firebox Insulation:

Once all back panel bolts are securely fastened, it is recommended to clad the outside of the Universal firebox and smoke gather with a heat-tolerant ceramic fiber insulation. This will increase radiated heat output through the fireplace opening and further substantially augment convection heat emission.

The ceramic fibre heat insulation material is however not supplied as part of the standard cabinet kit.

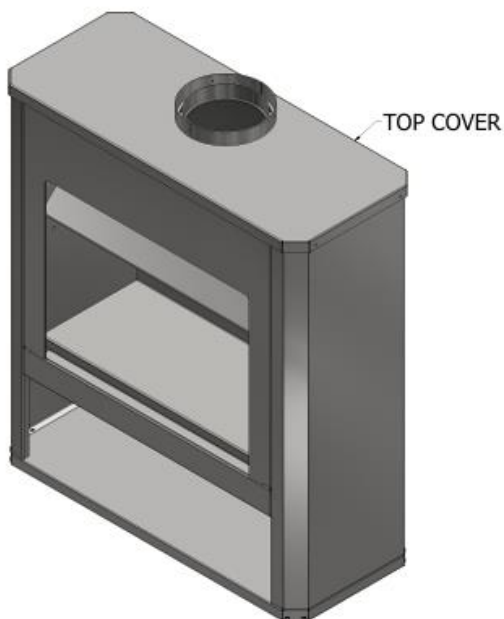
STEP 9: Installation of the Side Cover Panels



- These two panels serve to separate the log box from the firebox chamber. They prevent small animals from accessing the cabinet for shelter and heat insulation cladding from falling through the opening.
- Installation of the panels is done from the log box by pushing these upwards into the cavity spaces and bolting in place.
- Four M6 x 16 hexagonal bolts and nuts are required for this step.

Tools required: 2 x 10mm Spanners

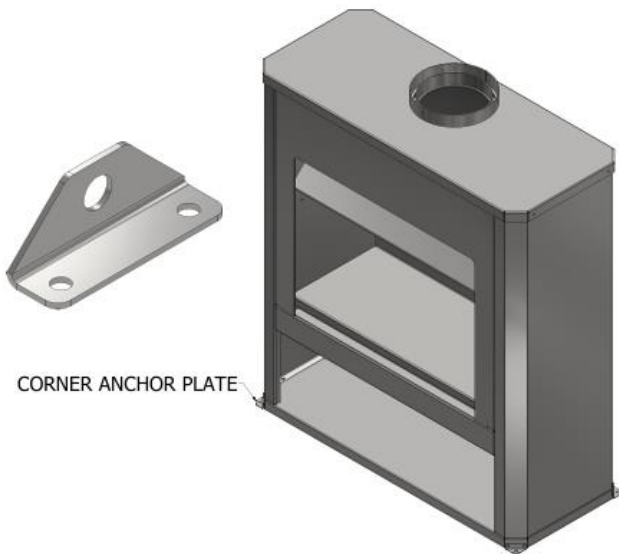
STEP 10: Installation of the Top Cover Panel



- The top cover panel can now be placed in position and secured with four M6 x 20 Dome-head Allen Cap screws.
- Before bolting the cover in place, ensure that the panel is pressed down correctly, overlapping all four sides of the cabinet.

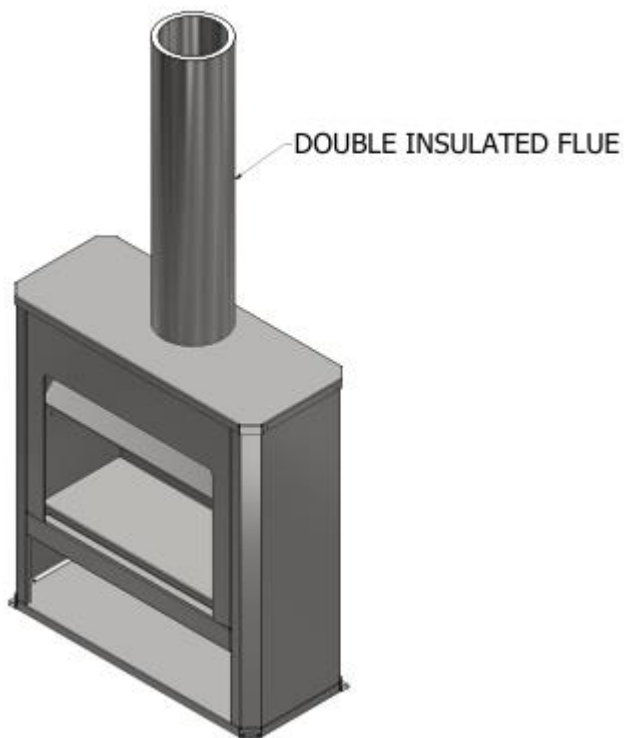
Tools required: Allen Key Wrench and 10mm Spanner

STEP 11: Bolting the Cabinet onto the Ground



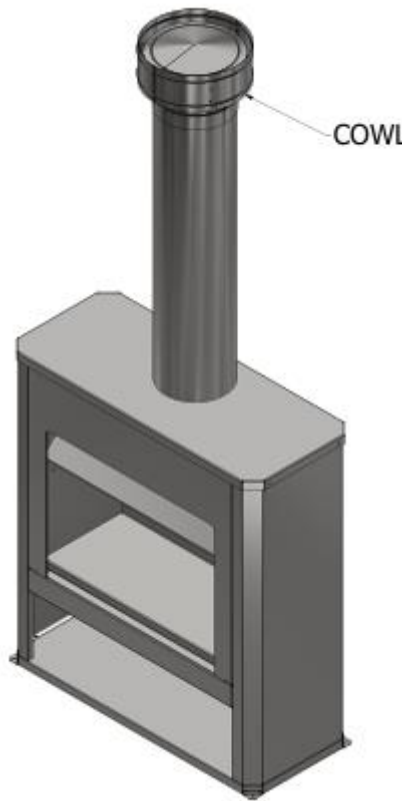
- To comply with requirements in certain geographic areas, the cabinet is supplied with four anchoring brackets.
- Attached to the corners of the cabinet, the brackets can be bolted in place using the Rivnuts, provided.
- Once attached, the brackets provide a convenient means of anchoring the cabinet into the ground, with suitable type of bolts.
- Due to the varying requirements, anchor bolts are not provided.

STEP 12: Mounting of the Double-insulated Flue



- Supplied as part of the cabinet kit, the double-insulated flue consists of an inner, diameter 250mm flue pipe, and an outer, diameter 300mm flue pipe, with insulation material filling the cavity space in between the two.
- To mount the flue, the inner needs to be slightly extracted from the outer pipe, by roughly 10 cm, to enable the insertion of the knurled end into the inner of the two spigots, this being the firebox smoke gather spigot.
- With the inner flue located inside the spigot, the outer flue can now be pulled down again and placed over the cabinet spigot.
- The outer spigot has three tapped holes, which when lined up with the corresponding holes on the outer flue will allow for convenient assembly using the black fasteners, supplied.

STEP 13: Installing the Cowl



- To prevent the ingress of water, during inclement weather, a suitable cowl must be fitted, at the top of the flue.
- The cowl with a diameter corresponding to the outer flue diameter of 300mm, is pushed, cap-style, over the flue end.
- Attachment of the cowl should take the form of drilling three holes, at the 12h, 4h and 8 o'clock positions, to enable the cowl attachment by means of suitable self-tapping screws.
- This will allow for the convenient removal of the cowl, when required for flue sweeping purposes.